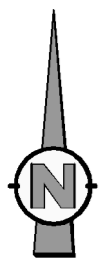
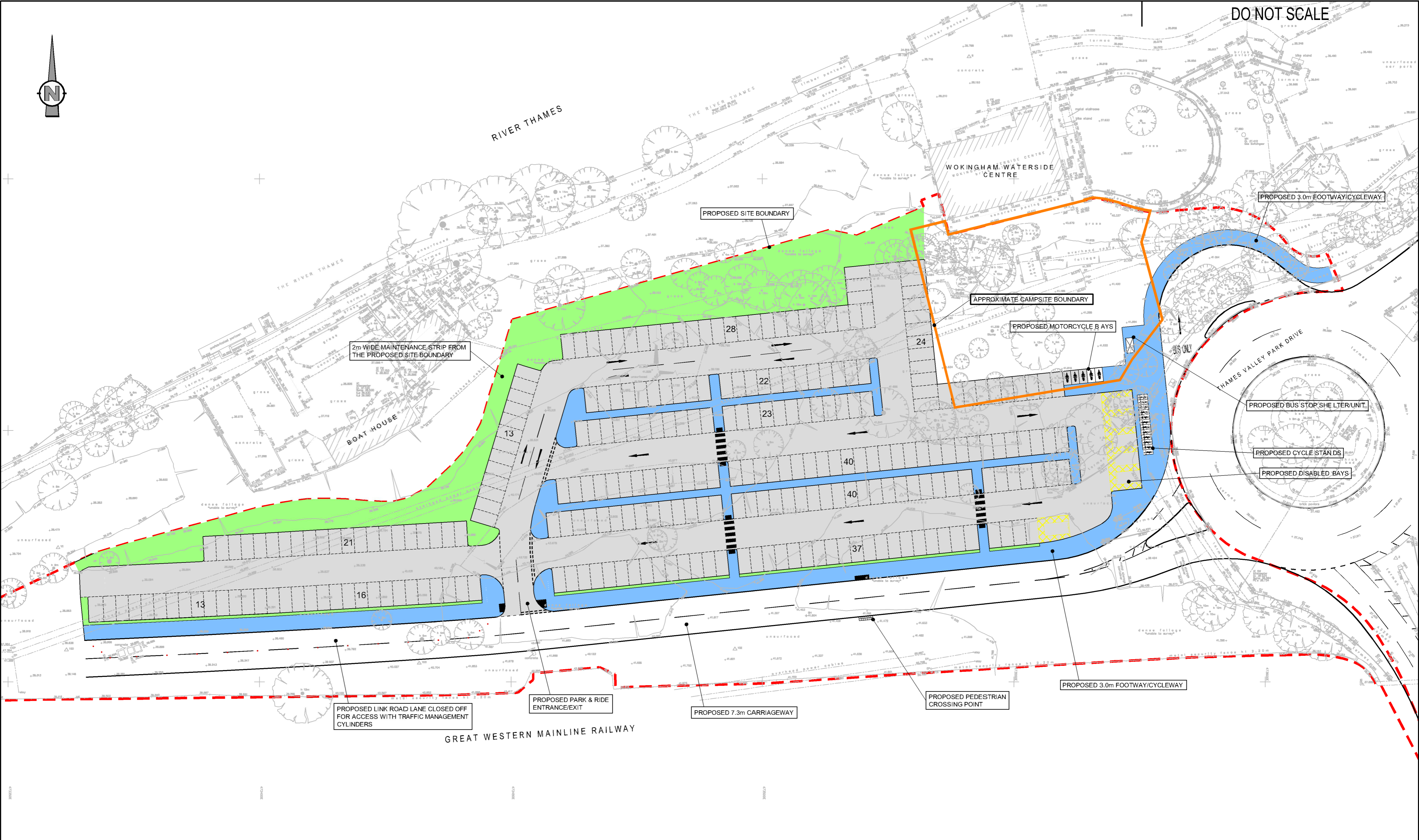


S:\70012699 - TYP PARK AND RIDE (LSTF 2015-16)\E MODELS AND DRAWINGS\DEVELOPMENT\AUTOCAD\SKETCHES\5049_TVP_SK_006.DWG 04/11/2016 10:36:28 Marsland, Richard



DO NOT SCALE



REV	DATE	BY	DESCRIPTION	CHK	APD
D	08/08/16	RJM	BUS LAYBY LAYOUT UPDATED, TEMP LINK REMOVED	TB	SR
C	18/05/16	TRA	ROUNDBOUT/ENTRY ARM AMENDED	TRA	TB
B	03/02/16	TRA	BUS STOPS AND TOILET BLOCK REMOVED	TRA	TB
A	19/11/15	TRA	FIRST ISSUE	TRA	TB

DRAWING STATUS: FOR INFORMATION ONLY

**WOKINGHAM
BOROUGH COUNCIL**

Shute End, Wokingham, Berkshire RG40 1BN
Tel: (0118) 974 6000 Web: www.wokingham.gov.uk

CLIENT:	WOKINGHAM BOROUGH COUNCIL
ARCHITECT:	

PROJECT:	THAMES VALLEY PARK PARK & RIDE
TITLE:	PRELIMINARY LAYOUT - OPTION 6 EXCLUDING CAMPSITE AREA & EXTRA SPACES 277 SPACES (INCLUDES 6 DISABLED SPACES)

SCALE @ A2:	1:500	CHECKED:	TB	APPROVED:	SR
CAD FILE:	5049_TVP_SK_006	DESIGN-DRAWN:	RJM	DATE:	August 2016
PROJECT No:	5049	DRAWING No:	TVP/SK/006	REV:	D