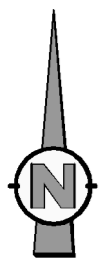
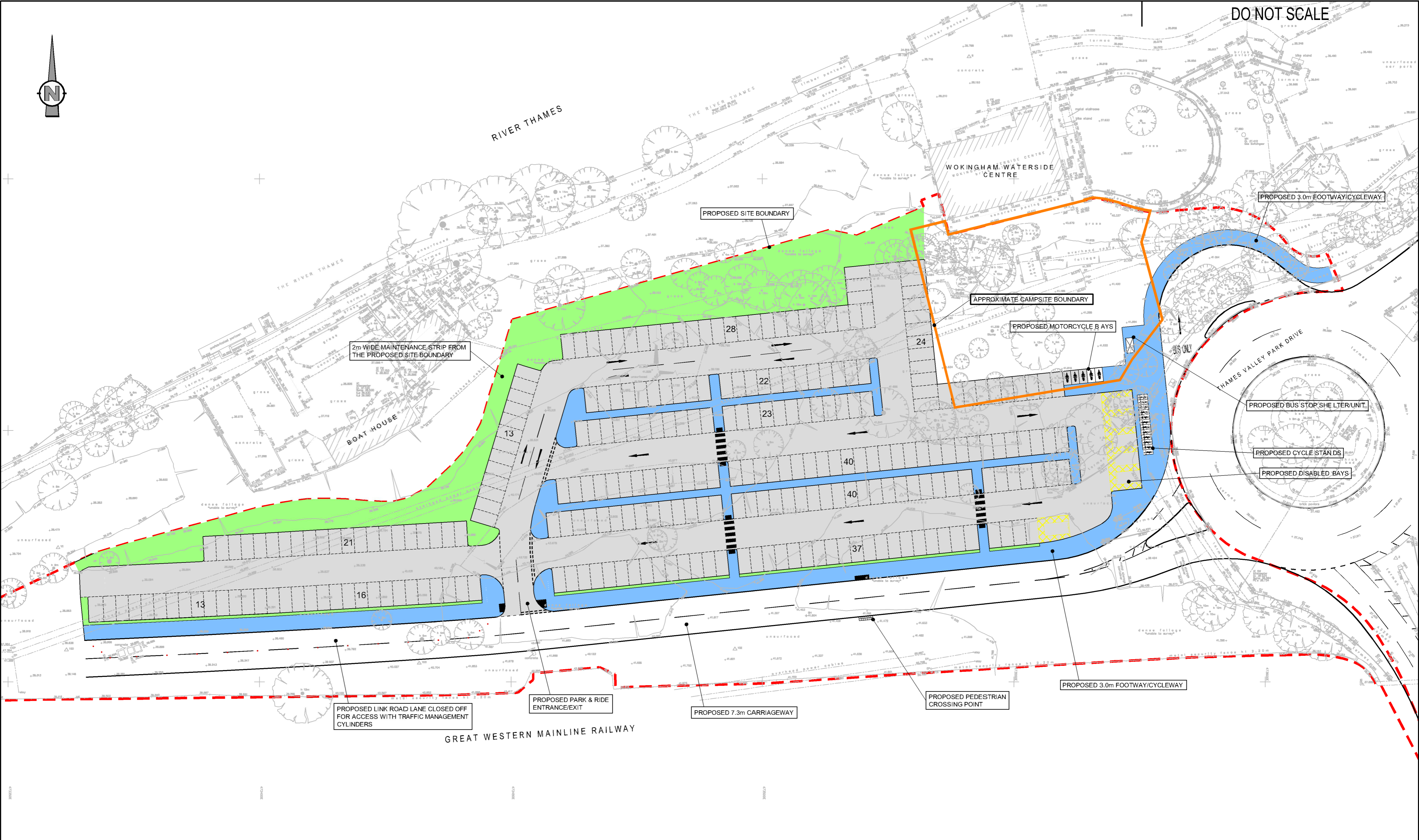


S:\70012699 - TYP PARK AND RIDE (LSTF 2015-16)\E MODELS AND DRAWINGS\DEVELOPMENT\AUTOCAD\SKETCHES\5049\_TVP\_SK\_006.DWG 04/11/2016 10:36:28 Marsland, Richard



DO NOT SCALE



REV	DATE	BY	DESCRIPTION	CHK	APD
D	08/08/16	RJM	BUS LAYBY LAYOUT UPDATED, TEMP LINK REMOVED	TB	SR
C	18/05/16	TRA	ROUNDBOUT/ENTRY ARM AMENDED	TRA	TB
B	03/02/16	TRA	BUS STOPS AND TOILET BLOCK REMOVED	TRA	TB
A	19/11/15	TRA	FIRST ISSUE	TRA	TB

DRAWING STATUS: FOR INFORMATION ONLY

**WOKINGHAM  
BOROUGH COUNCIL**

Shute End, Wokingham, Berkshire RG40 1BN  
Tel: (0118) 974 6000 Web: www.wokingham.gov.uk

CLIENT:  
**WOKINGHAM BOROUGH COUNCIL**

ARCHITECT:

PROJECT:  
**THAMES VALLEY PARK  
PARK & RIDE**

TITLE:  
**PRELIMINARY LAYOUT - OPTION 6  
EXCLUDING CAMPSITE AREA & EXTRA SPACES  
277 SPACES (INCLUDES 6 DISABLED SPACES)**

SCALE @ A2: 1:500	CHECKED: TB	APPROVED: SR
CAD FILE: 5049_TVP_SK_006	DESIGN-DRAWN: RJM	DATE: August 2016
PROJECT No: 5049	DRAWING No: TVP/SK/006	REV: D