



Department
for Transport

Distributional Impacts: Accessibility Audit

TAG Reference

TAG Unit A4.2 - Distributional Impacts

Version Control

Date	Description
Jan-14	Definitive release
17/10/2013	Release of restructured guidance

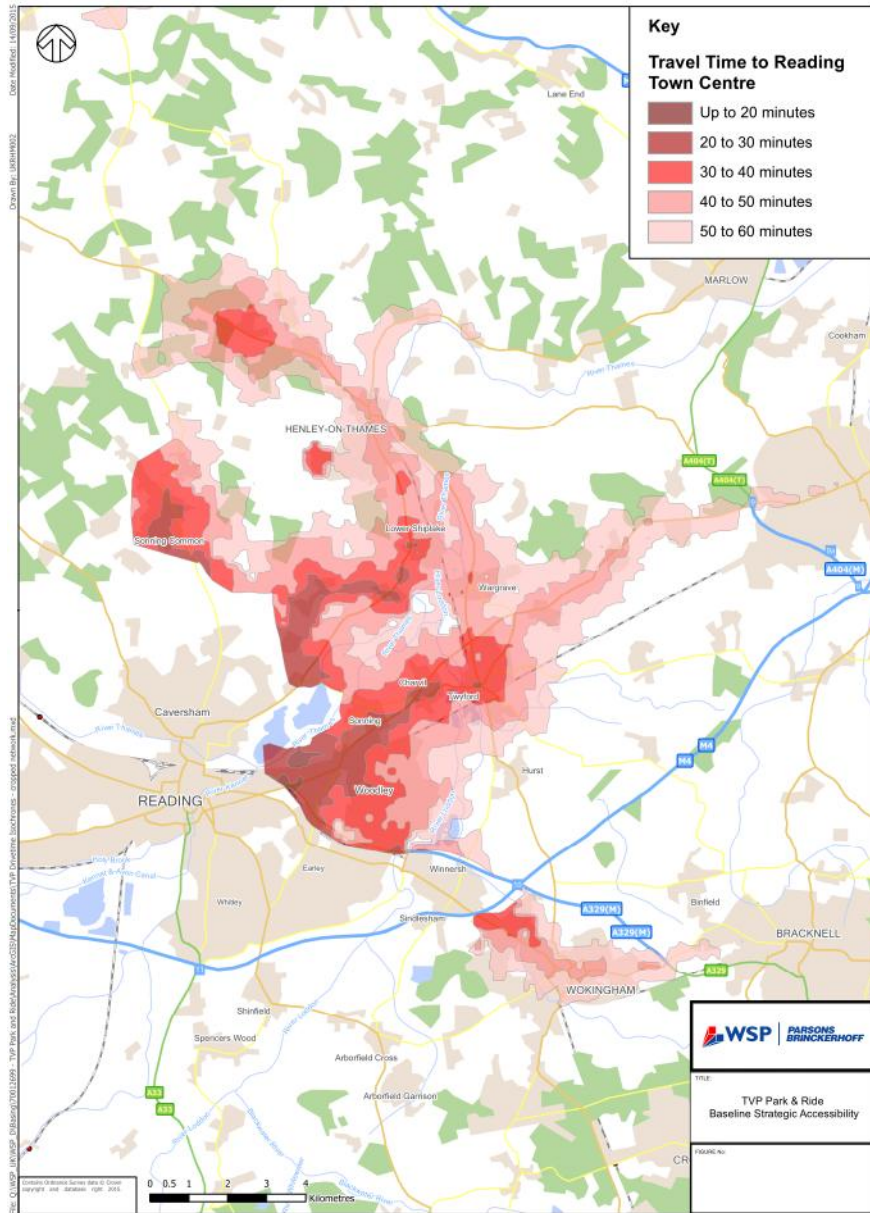
Contact

**Transport Appraisal and Strategic Modelling (TASM) Division
Department for Transport
Zone 2/25 Great Minster House
33 Horseferry Road
London
SW1P 4DR
tasm@dft.gsi.gov.uk
Tel 020 7944 6176
Fax 020 7944 2198**

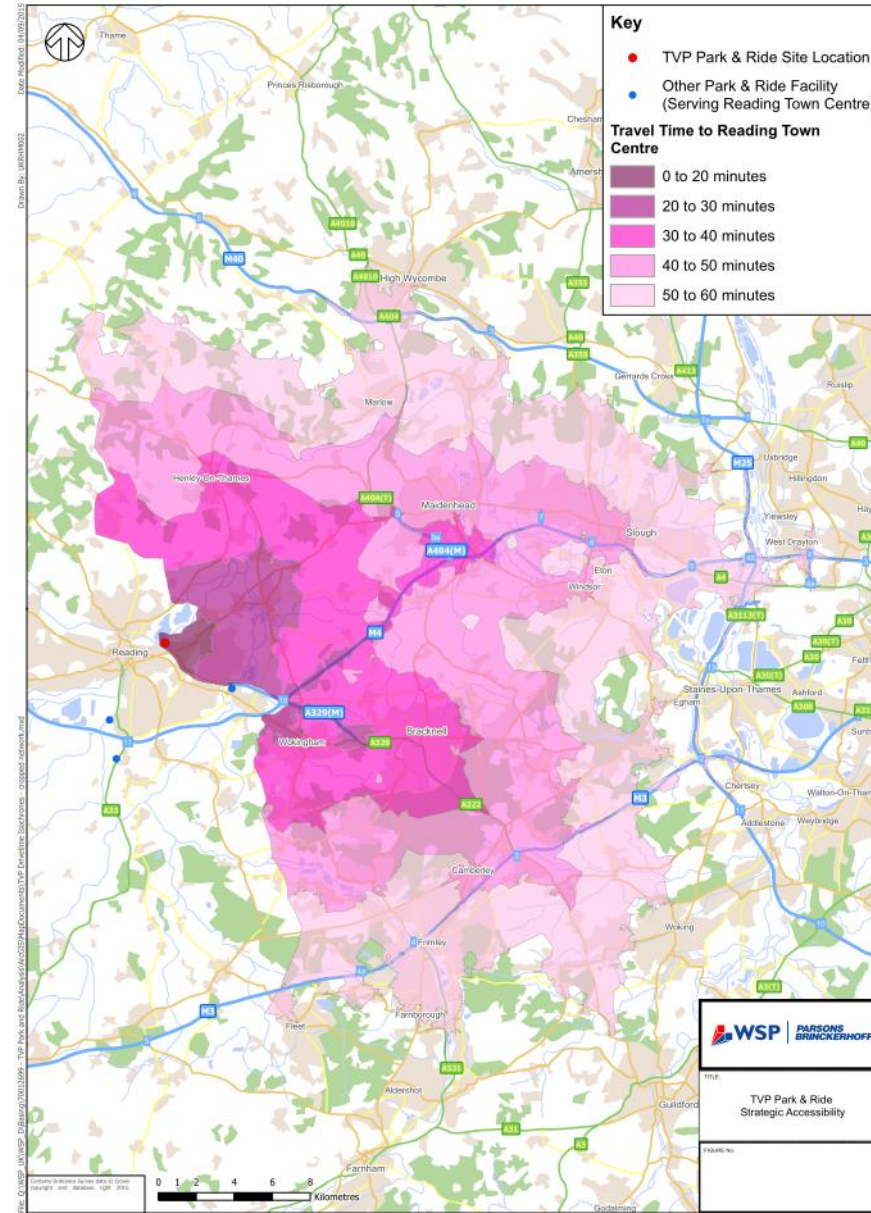
Distributional Impacts: Accessibility Audit

Element of end-to-end journey	Impacts of transport intervention for journeys to key destinations [A]	Level of importance given to each element of the journey by each group [B]					Accessibility score [C] = [A] * [B] for access to the Main centre				
	Main centre	No car h/holds	Young people	Older people	Women	Dis. pple	No car h/holds	Young people	Older people	Women	Dis. Pple
Pre-journey info.	2	1	1	2	1	2	2	2	4	2	4
Info. at transport stop	1	2	2	3	2	3	2	2	3	2	3
Seating & protection	2	2	2	4	2	4	4	4	8	4	8
Ability to board vehicle from kerb	2	1	1	4	1	4	2	2	8	2	8
Ticket purchase and welcome from driver	2	1	2	3	1	3	2	4	6	2	6
Ability to navigate inside vehicle	2	1	1	4	1	4	2	2	8	2	8
Comfort of journey	2	2	2	4	2	4	4	4	8	4	8
Information given during journey	2	1	1	3	1	4	2	2	6	2	8
Ability to alight vehicle direct to kerb	1	1	1	4	1	4	1	1	4	1	4
Movement within interchanges	1	2	1	3	1	3	2	1	3	1	3
Total score							23	24	58	22	60
Accessibility Audit Appraisal							Slight Beneficial	Slight Beneficial	Large Beneficial	Slight Beneficial	Large Beneficial
Overall Accessibility Audit Score							Moderate Beneficial				

Without Scheme



With Scheme



Strategic Accessibility Assessment - To Reading Town Centre

Person with Health Problems

Public Transport Accessibility of population in the impact area to Reading town centre (07:30-09:30 weekday)	Without Scheme		With Scheme		% Change		Overall Score	
	No Health Issues	Long Term Health Issue	No Health Issues	Long Term Health Issue	No Health Issues	Long Term Health Issue	No Health Issues	Long Term Health Issue
0-10 mins								
11-20 mins	1022	137	7858	1277	668.88%	832.12%	Large Beneficial	Large Beneficial
21-30 mins	10752	1876	44422	6284	313.15%	234.97%	Large Beneficial	Large Beneficial
31-40 mins	27225	4218	134908	19226	395.53%	355.81%	Large Beneficial	Large Beneficial
41-50 mins	33035	5088	235989	34051	614.36%	569.24%	Large Beneficial	Large Beneficial
51- 60 mins	30688	4464	311857	46444	916.22%	940.41%	Large Beneficial	Large Beneficial
Total Population within 60 mins	102722	15783	735034	107282				
Impact Area Population Totals								

Accessibility Assumptions

Journey Purpose:

Access to employment

Travel Time:

Travelling on a weekday between 07:30 and 09:30 (no maximum travel time)

Baseline Default Walk Distances:

400m to public transport stop from origin / 400m walk from public transport stop to destination

Assessment Criteria:

Person with long term health issue and person without

Strategic Accessibility Assessment - To Reading Town Centre

Job Seeker

Public Transport Accessibility of population in the impact area to Reading town centre (07:30-09:30 weekday)	Without Scheme		With Scheme		% Change		Overall Score	
	Employed	Job Seeker	Employed	Job Seeker	Employed	Job Seeker	Employed	Job Seeker
0-10 mins								
11-20 mins	518	39	4019	220	675.87%	464.10%	Large Beneficial	Large Beneficial
21-30 mins	5889	300	25527	964	333.47%	221.33%	Large Beneficial	Large Beneficial
31-40 mins	14858	573	79144	3694	432.67%	544.68%	Large Beneficial	Large Beneficial
41-50 mins	18748	699	132243	6955	605.37%	894.99%	Large Beneficial	Large Beneficial
51- 60 mins	17544	656	175492	8905	900.30%	1257.47%	Large Beneficial	Large Beneficial
Total Population within 60 mins	57557	2267	416425	20738				
Impact Area Population Totals								

Accessibility Assumptions

Journey Purpose:

Interviews / employment

Travel Time:

Travelling on a weekday between 07:30 and 09:30 (no maximum travel time)

Baseline Default Walk Distances:

400m to public transport stop from origin / 400m walk from public transport stop to destination

Assessment Criteria:

Unemployed and Employed

Strategic Accessibility Assessment - To Reading Town Centre

No Car HH

Public Transport Accessibility of population in the impact area to Reading town centre (07:30-09:30 weekday)	Without Scheme		With Scheme		% Change		Overall Score	
	Cars in HH	No Car HH	Cars in HH	No Car HH	Cars in HH	No Car HH	Cars in HH	No Car HH
0-10 mins								
11-20 mins	313	47	2765	47	783.39%	0.00%	Large Beneficial	Neutral
21-30 mins	4209	677	18133	677	330.81%	0.00%	Large Beneficial	Neutral
31-40 mins	11058	1245	54816	1245	395.71%	0.00%	Large Beneficial	Neutral
41-50 mins	13850	1797	91017	1797	557.16%	0.00%	Large Beneficial	Neutral
51- 60 mins	13050	1746	117516	1746	800.51%	0.00%	Large Beneficial	Neutral
Total Households within 60 mins	42480	5512	284247	5512				
Impact Area Household Totals								

Accessibility Assumptions

Journey Purpose:

Employment

Travel Time:

Travelling on a weekday between 07:30 and 09:30 (no maximum travel time)

Baseline Default Walk Distances:

400m to public transport stop from origin / 400m walk from public transport stop to destination

Assessment Criteria:

Households with cars, and those without